

EAST NEW MARKET QUADRANGLE
MARYLAND
7.5 MINUTE SERIES (ORTHOPHOTOQUAD)



State of Maryland
Parris N. Glendening, Governor
Kathleen Kennedy Townsend, Lt. Governor
Department of Natural Resources
J. Charles Fox, Secretary
Karen M. White, Deputy Secretary
Resource Assessment Service
Paul O. Massicot, Director
Maryland Geological Survey
Emery T. Cleaves, Director





Shoreline Changes
East New Market Quadrangle, MD

Compiled by

Maryland Geological Survey
Coastal and Estuarine Geology Program
2300 St. Paul Street
Baltimore, Maryland 21218
Telephone: (410) 554-5500
Website: www.mgs.md.gov

2001

LEGEND

-  1848 Shoreline
-  1940 Shoreline
-  1944 Shoreline
-  1995 Shoreline

SOURCES OF DATA

Base Image
Composite of resampled digital orthophoto quarter quads (East New Market - NE, NW, SE, SW) produced by the Maryland Department of Natural Resources (DNR) from aerial photography flown on March 25, 1995

Shorelines
1848 - Historical Shorelines CZM Map 67A (Maryland Geological Survey, 1975); digitized using AutoCAD

1940, 1944 - National Oceanic and Atmospheric Administration, National Ocean Service T-sheets listed below; digitized using GSMAP or AutoCAD or vectorized using CADCORE

T-sheet	Field Edit	Date of Photography
T-5808	none	1940
T-8244	1944	1938, 1942

1995 - orthophotoquad shoreline extracted from a DNR digital wetlands delineation based on photo interpretation of digital orthophoto quarter quads

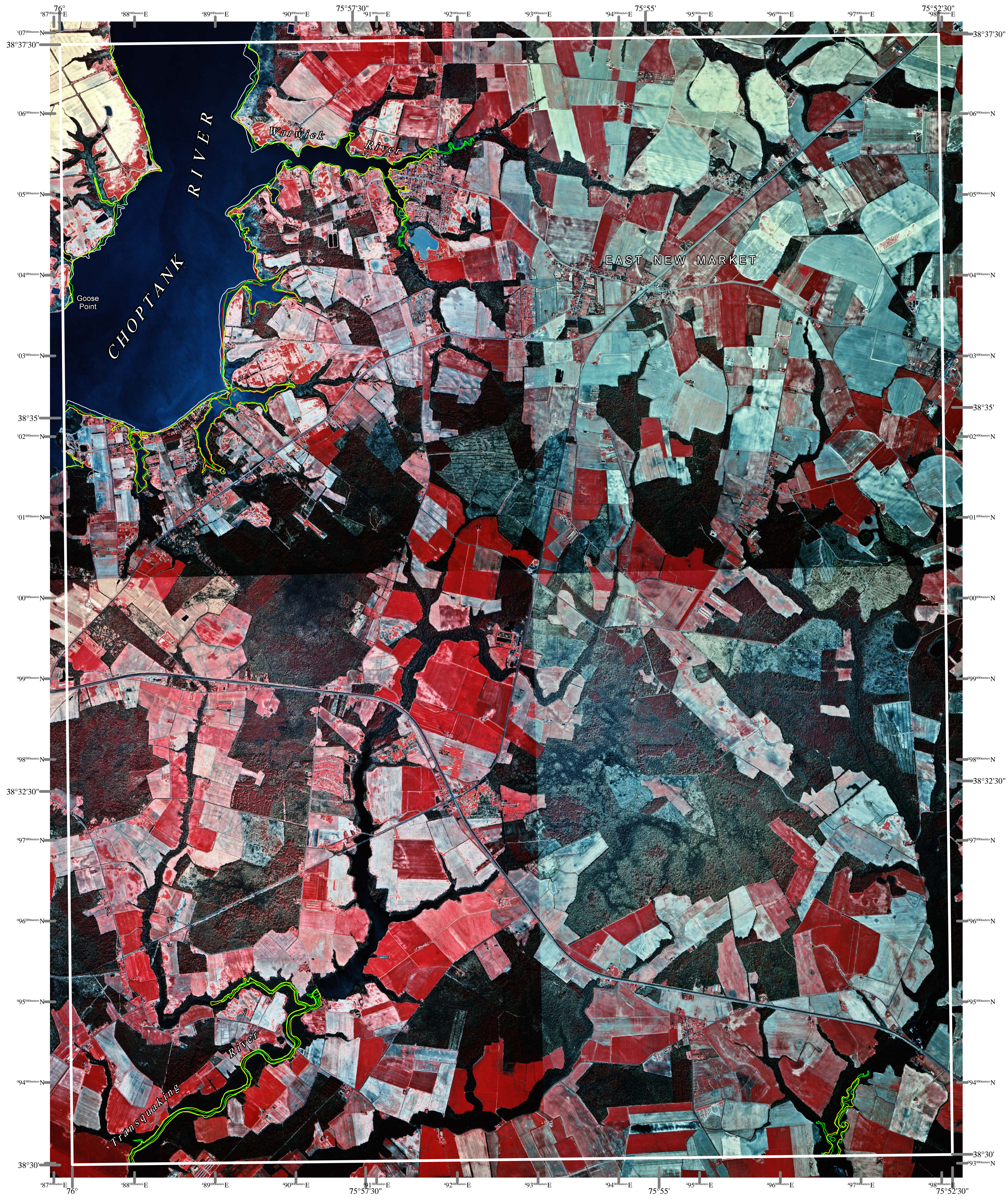
ACKNOWLEDGMENTS

This map was prepared using the geographic information system TNTmips by MicroImages, Inc.

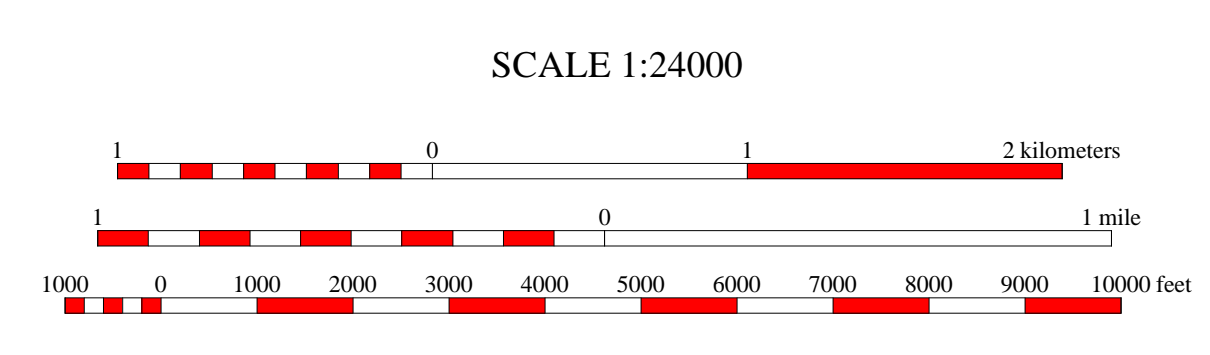
Partial funding was provided by a grant from the National Oceanic and Atmospheric Administration (Award No. NA 07OZ0118), administered by the Maryland Department of Natural Resources, Coastal Zone Management Program (CZM Grant M01-056 CZM 040).

The facilities and services of the Maryland Department of Natural Resources are available to all without regard to race, color, religion, sex, sexual orientation, age, national origin, or physical or mental disability.

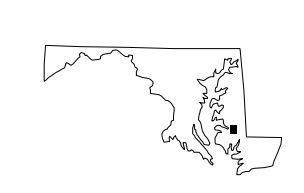
This document is available in alternative format upon request from a qualified individual with a disability.



North American Datum of 1983 (NAD 83)
Projection and 1000-meter grid ticks:
Maryland State Plane Coordinate System



HORIZONTAL DATUM NAD 83



1	2	3
4	5	6
7	8	

- 1 Trappe
- 2 Preston
- 3 Federalburg
- 4 Cambridge
- 5 Rhoadsdale
- 6 Blackwater River
- 7 Chicamacomico River
- 8 Mardela Springs

INDEX TO ADJOINING 7.5' MAPS

EAST NEW MARKET, MD
MGS-01-067-1
Second Edition
DATE OF PHOTOGRAPHY
March 25, 1995

