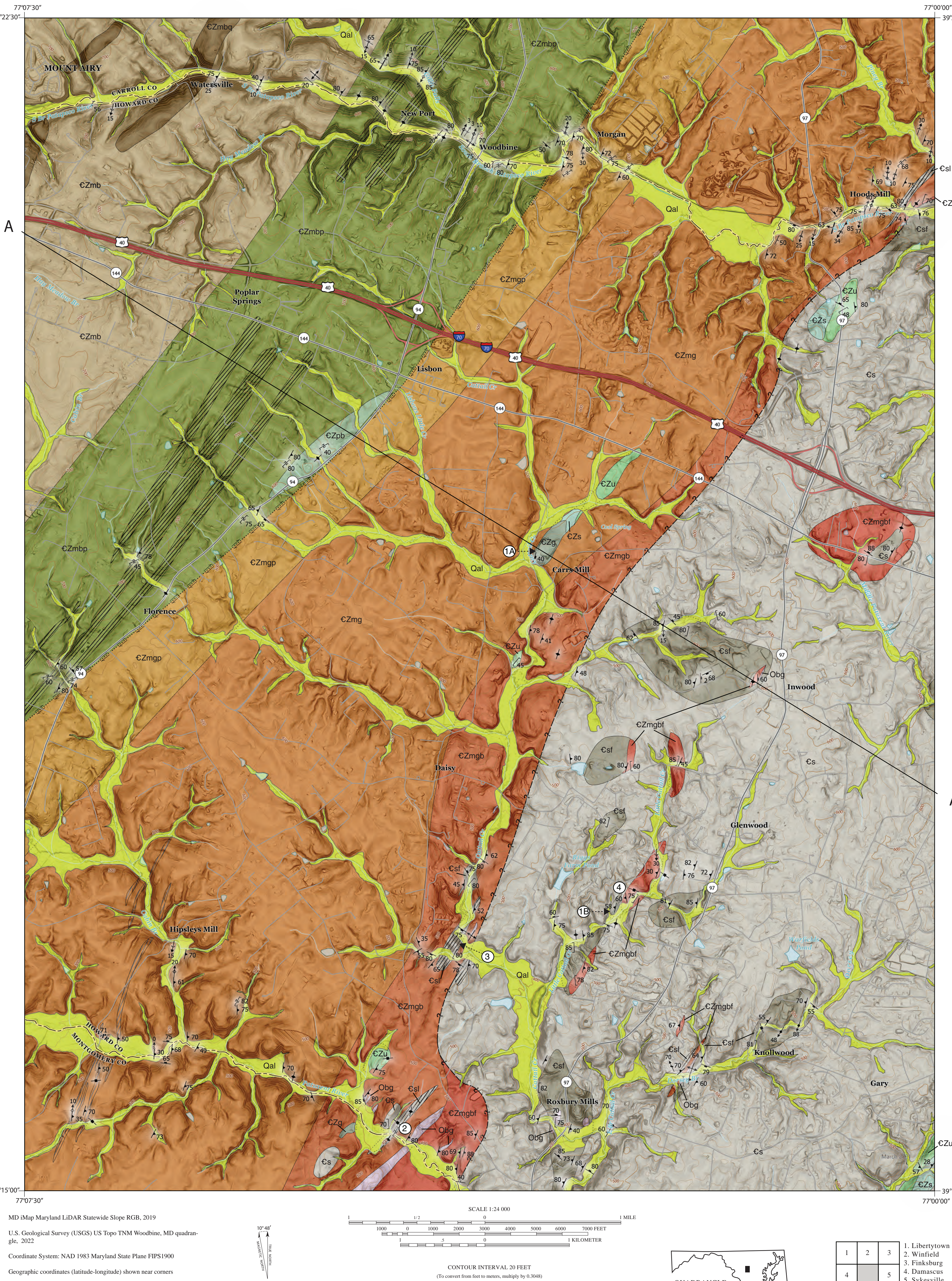


Open File Geologic Map of the Woodbine Quadrangle, Howard, Carroll, and Montgomery Counties, Maryland

by Rebecca Kavage Adams, 2024

Description of Map Units

- Quaternary**
 - Alluvium (Qal)**: Poorly to well-sorted, stratified mixtures of unconsolidated clay, silt, sand, gravel, and cobbles underlying flood plains of nearly all rivers and tributaries.
 - Bear Island Granodiorite (Obg)**: Pinkish-gray, fine- to coarse-grained, muscovite-biotite granodiorite and related pegmatite composed largely of plagioclase feldspar, with lesser quartz and mica.
- Ordovician**
 - Sykesville Formation (Lower Cambrian)**
 - Linedate schist (Cs)**: Exposures found adjacent to and within Mather Gorge and Sykesville Formations.
 - Sykesville Formation, schist (Csf)**: Variegated, olive- to pinkish-gray, granitic-looking matrix containing abundant small 0.04- to 2-inch long (1 mm to 5 cm) fragments of quartz and dark-grey schist.
 - Sykesville Formation, coarse fragments (Csf)**: Similar to schist, but contains coarse fragments of metagraywacke, quartz-rich schist, amphibolite and banded schist ranging from 2 inches to 5 feet (5 cm to 2 m) in size.
 - Mather Gorge Formation (Lower Cambrian? and Neoproterozoic?)**
 - Schist with interlayered metagraywacke (CZmg)**: Quartz-rich schist and quartzitic metagraywacke interbedded in layers and lenses ranging from 0.1 inch to 3 feet thick (2.5 mm to 1 m).
 - Metagraywacke (Pleasant Grove shear zone) (CZmg)**: Interbedded quartz-mica schist and quartzitic metagraywacke with penetrative S-C metamorphic fabric.
 - Banded schist with interlayered metagraywacke (CZmg)**: Interbedded quartz-mica schist and quartzitic metagraywacke with intermittent zones of banded schist.
 - Banded schist with metagraywacke fragments (CZmg)**: Banded, light-gray to white and dark-gray to black, commonly contorted, schist.
 - Ultramafic Rocks (CZu)**: Greenish-gray serpentinite, soapstone, and talc-chlorite schist.
 - Magnesian schist (CZs)**: Soft, very light-gray to dark greenish-gray actinolite-tremolite-chlorite schist.
 - Metagabbro (CZg)**: Very light-gray and dark-gray to black, coarse- to very coarse-grained plagioclase feldspar, hornblende, epidote.
- Lower Cambrian and/or Neoproterozoic**
 - Marburg Formation**
 - Metasiltstone (CZmb)**: Greenish-gray to light-olive-gray, phyllic metasiltstone.
 - Quartzite (CZmb)**: Light- to medium-olive gray, coarse-grained, blocky to massive quartzite.
 - Phyllite (Pleasant Grove Shear Zone) (CZmb)**: Greenish-gray, chlorite-sericite phyllite containing white vein quartz.
 - Prettyboy Schist (CZpb)**
 - Mica schist (CZpb)**: Dark greenish-gray, medium- to coarse-grained muscovite schist with mantled albite and garnet porphyroclasts.



Explanation of Map Symbols

- Contacts**: Geologic contacts, inferred; dotted where concealed by alluvium, dashed where projected in cross section.
- Faults**: Fault, unknown type, location inferred. Dotted where concealed by alluvium.
- Folds**: Showing axial trace and plunge direction.
- Linear Features**: Showing trend and plunge.
- Other Features**: Quarry or mine, inactive; Garnet, euhedral, 1-5mm, seen in outcrop; Magnetite, euhedral, 1-5mm, seen in outcrop.

Base Map Symbols

- Transportation**: Primary highway, divided by median strip; Primary route, class 1 (divided, lanes separated); Primary route, class 1 (undivided); Secondary route, class 2; Light duty road or street, class 3; Railroad.
- Topography**: Topographic index contour (100-ft interval); Topographic intermediate contour (20-ft interval).
- Hydrography**: Stream; Spring; Water body (e.g. lakes, ponds, rivers).

References

Cloos, E., and Broedel, C.H., 1940. Geologic map of Howard County and adjacent parts of Montgomery and Baltimore Counties: Maryland Geological Survey, scale 1:62,500.

Cloos, E., Fisher, G.W., Hopson, C.A., and Cleaves, E.T., 1964. The geology of Howard and Montgomery Counties: Maryland Geological Survey, 373p.

Edwards, J.R., 1996. Geologic Map of the Winfield Quadrangle, Carroll and Frederick Counties, Maryland: Maryland Geological Survey, scale 1:24,000.

Fisher, G.W., Higgins, M.W., and Zietz, I., 1979. Geological interpretations of aeromagnetic maps of the crystalline rocks in the Appalachians, northern Virginia to New Jersey: Maryland Geological Survey Report of Investigations 32, 43 p.

Fossen, H., 2016. Structural Geology, 2nd edition: Cambridge University Press, 510p.

Krol, M.A., and Muller, P.D., 1995. Microstructural evidence for dextral shearing within the Pleasant Grove Zone, Maryland: Northeastern Geology and Environmental Sciences, v. 17, no. 2, p. 151-161.

Krol, M.A., Muller, P.D., and Lileman, B.D., 1999. Late Paleozoic deformation within the Pleasant Grove shear zone, Maryland: Results from ⁴⁰Ar/³⁹Ar dating of white mica, in Valentine, D.W. and Gates, A.E., eds., The Mid-Atlantic Piedmont: Tectonic Missing Link of the Appalachians: Boulder, Colorado, Geological Society of America Special Paper 330, p. 93-111.

Kunk, M.J., Wintz, R.P., Naeser, C.W., Naeser, N.D., Southworth, C.S., Drake, A.A. Jr., and Becker, J.L., 2005. Contrasting tectothermal domains and faulting in the Potomac terrane, Virginia-Maryland - Discrimination by ⁴⁰Ar/³⁹Ar and fission-track thermochronology: Geological Society of America Bulletin, v. 117, no. 9/10, p. 1347-1366.

Martin, A.J., and Bosbyshell, H., 2019. Further detrital zircon evidence for peri-Gondwanan blocks in the central Appalachian Piedmont Province, USA: Canadian Journal of Earth Sciences, v. 56, no. 10, p. 1061-1076.

Maxeiner, R.O., Ashton, K., Card, C.D., Morelli, R.M., and Knox, B., 2017. A field guide to naming migmatites and their textures, with Saskatchewan examples; in Summary of Investigations 2017, v. 2. Saskatchewan Geological Survey, Saskatchewan Ministry of the Economy, Miscellaneous Report 2017-4-2, Paper A-2, 21p.

Muller, P.D., 1994. Geologic map of the Finksburg Quadrangle, Carroll and Baltimore Counties: Maryland Geological Survey, scale 1:24,000.

Muth, K.G., Arth, J.G., and Reed, J.C., Jr., 1979. A minimum age for the high grade metamorphism and granite intrusion in the Piedmont of the Potomac River gorge near Washington, D.C.: Geology, v. 7, no. 7, p. 349-350.

Passchier, C.W., and Trouw, R.A.J., 2005. Microtectonics, 2nd edition: Springer-Verlag, 366p.

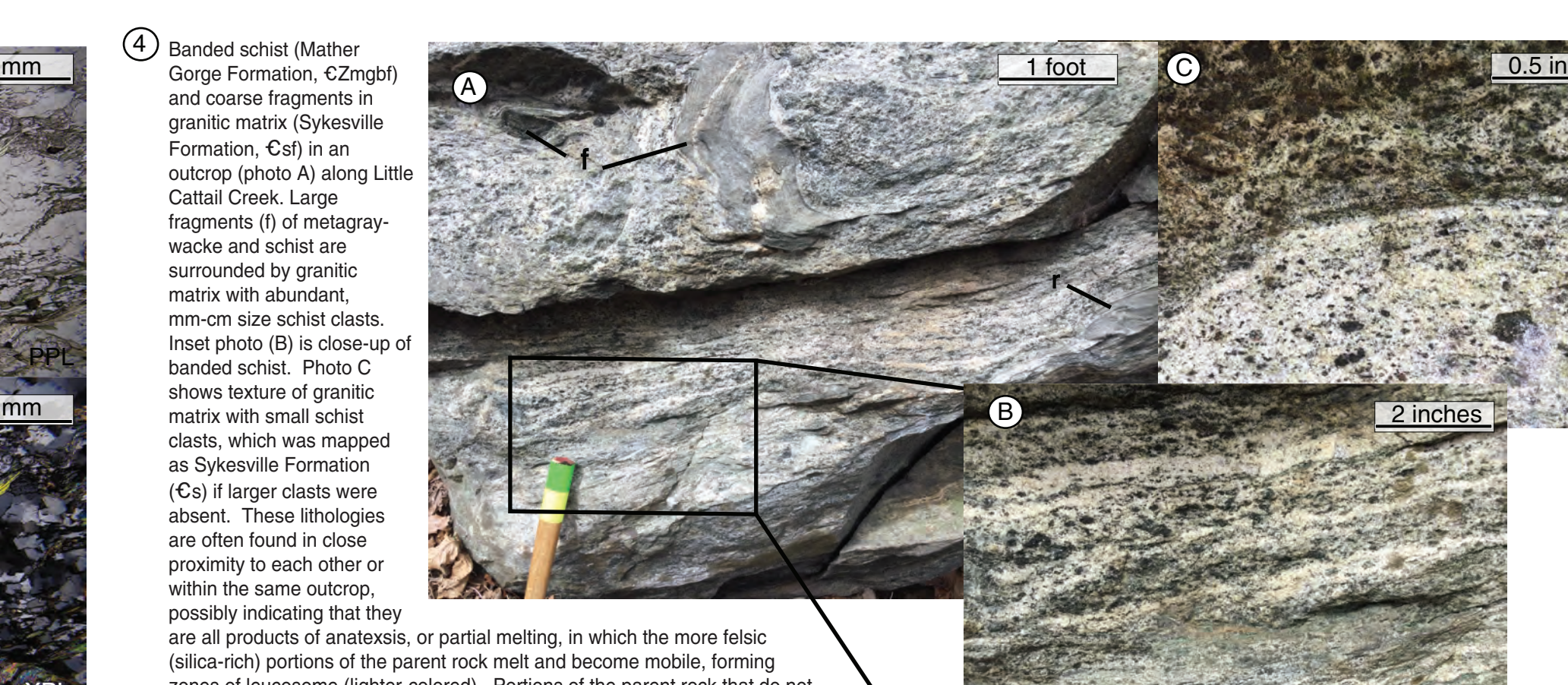
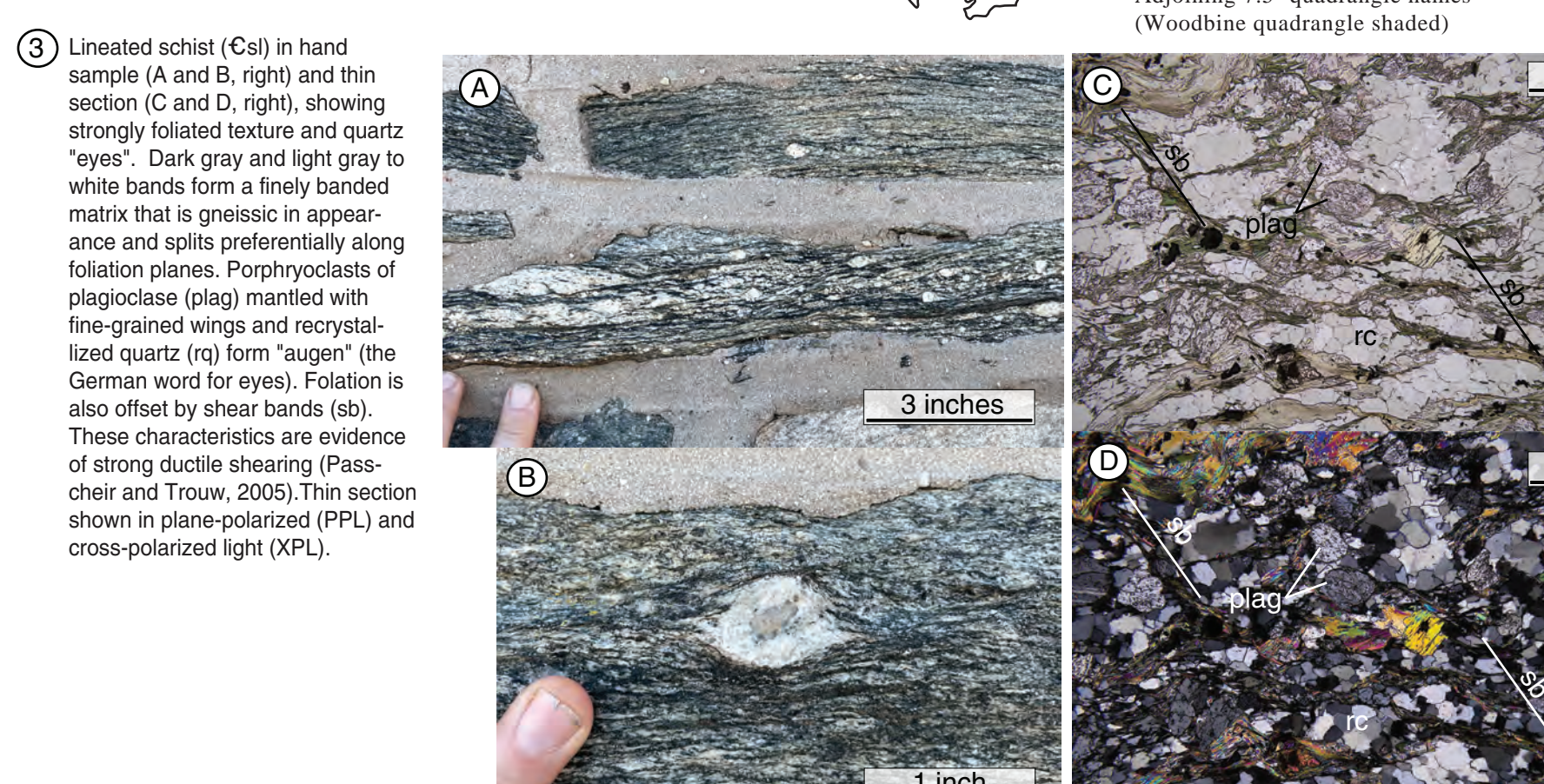
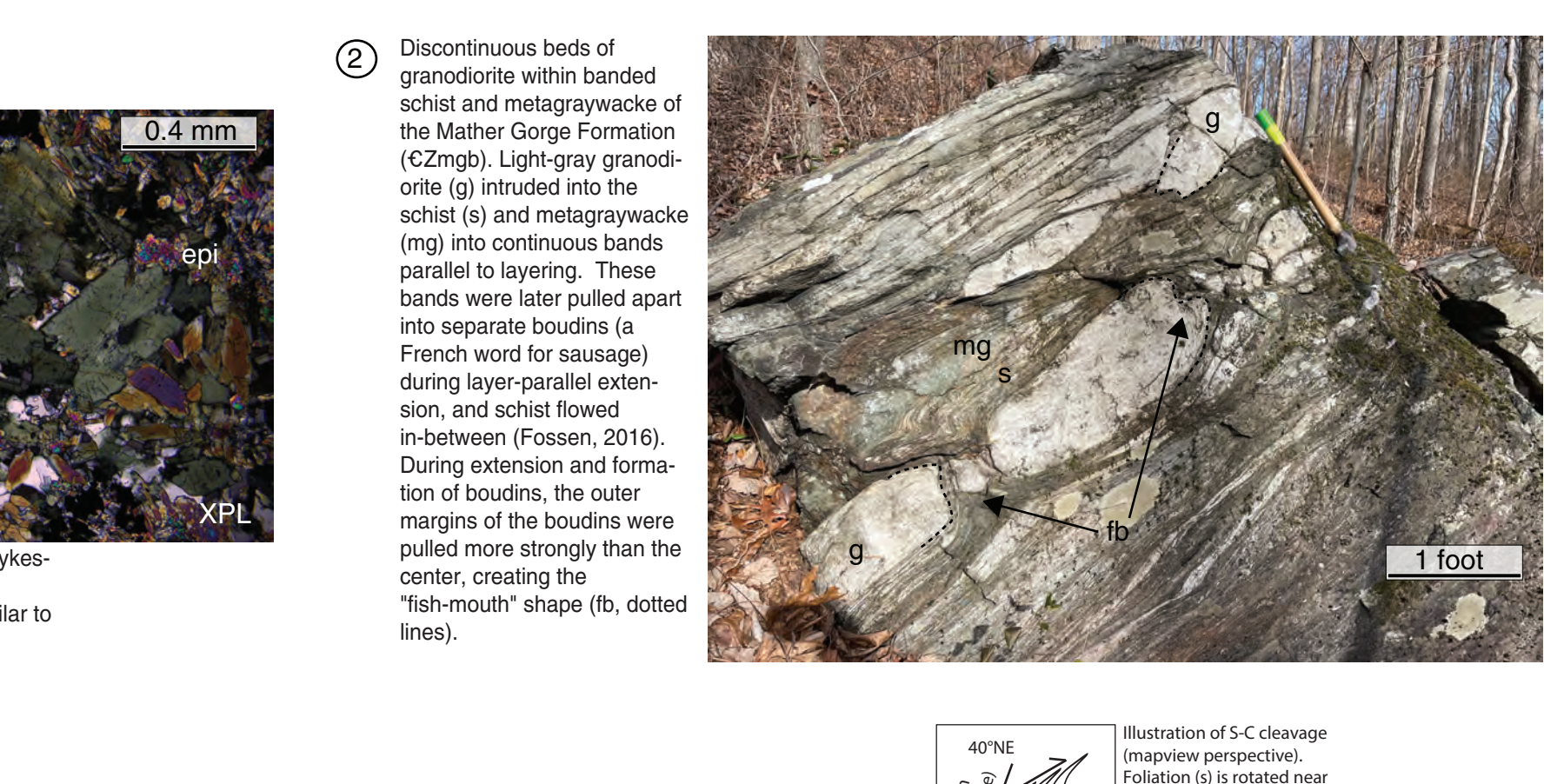
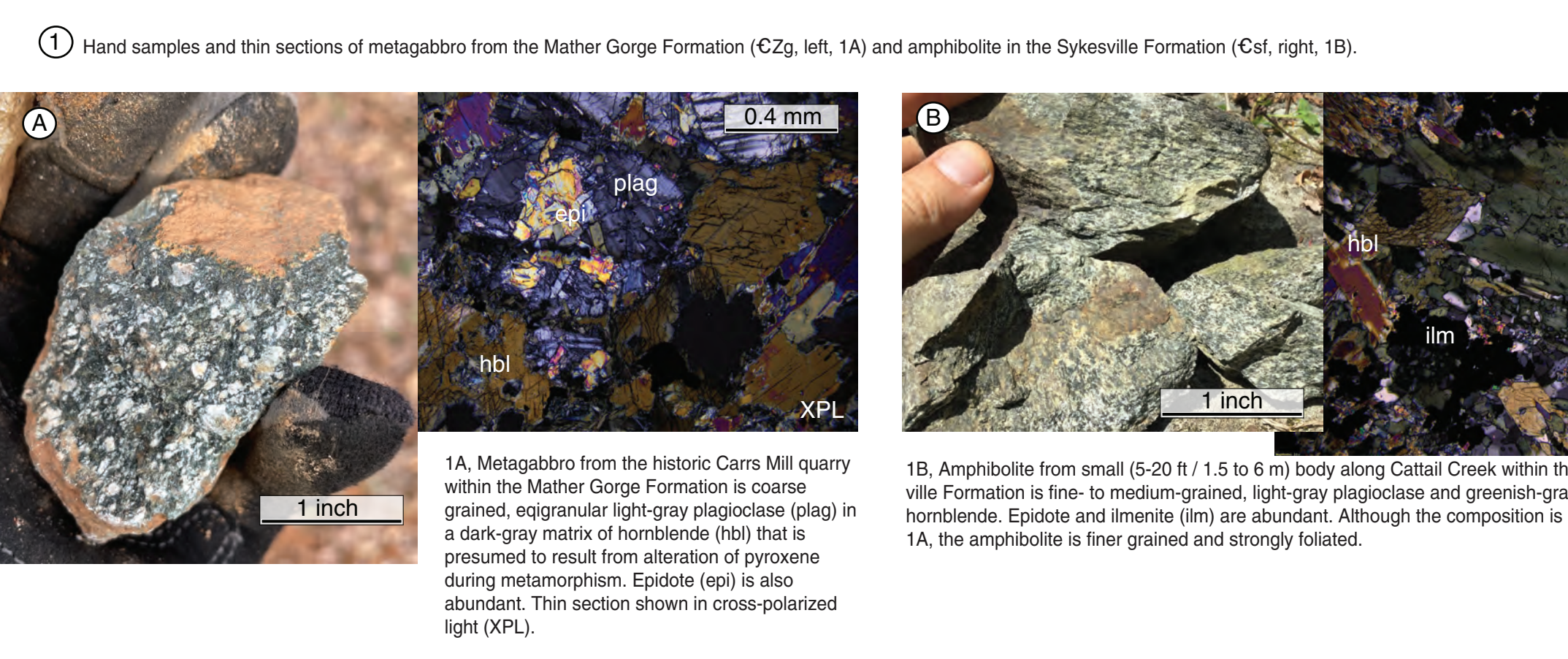
Pearce, N.C., 1961. Mineral deposits of Maryland, excluding fuels, sand, and gravel: U.S. Geological Survey Mineral Resource Investigations Map MR-12, scale 1:250,000.

Reed, J.C., and Jolly, J., 1963. Crystalline Rocks of the Potomac River Gorge near Washington, D.C.: U.S. Geological Survey Professional Paper 414-H, p. H1-H16.

Sawyer, E., 2008. Atlas of Migmatites: Canadian Science Publishing, v. 9, 371p.

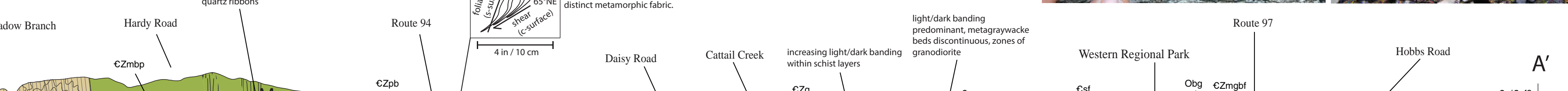
Southworth, S., Brezinski, D.K., Drake, A.A., Burton, W.C., Ondorff, R.C., Froelich, A.J., Reddy, J.E., Denemy, D., and Daniels, D.L., 2008. Geologic map of the Frederick 30' x 60' quadrangle, Maryland, Virginia, and West Virginia: U.S. Geological Survey Scientific Investigations Map SIM-2889, scale 1:100,000.

Wintz, R.P., Kunk, M.J., Mulvey, B.K., Southworth, C.S., 2010. ⁴⁰Ar/³⁹Ar dating of Silurian and Late Devonian clastics in lower greenschist-facies rocks in the Westminister terrane, Maryland, USA: Geological Society of America Bulletin, v. 122, issue 5-6, pp. 658-677.



Use constraint: The Maryland Geological Survey makes no warranty, express or implied, as to the use or appropriateness of the data and there are no warranties of merchantability or fitness for use. The Maryland Geological Survey makes no representation as to the accuracy or completeness of the data and may not be held liable for human error or defect. Data are only valid at 1:24,000 scale. Data should not be used at a scale greater than that.

The facilities and services of the Maryland Department of Natural Resources are available to all without regard to race, color, religion, sex, sexual orientation, age, national origin, or physical and mental disability.



Acknowledgements: This map was partially funded by the U.S. Geological Survey, National Cooperative Mapping Program, under USGS award number G21AC10768. The author appreciates the map reviews by K. Brezinski. The views and conclusions contained in this document are those of the author and should not be interpreted as necessarily representing the official policies, either expressed or implied, of the U.S. Government. Geologic field mapping conducted in 2021-2022.